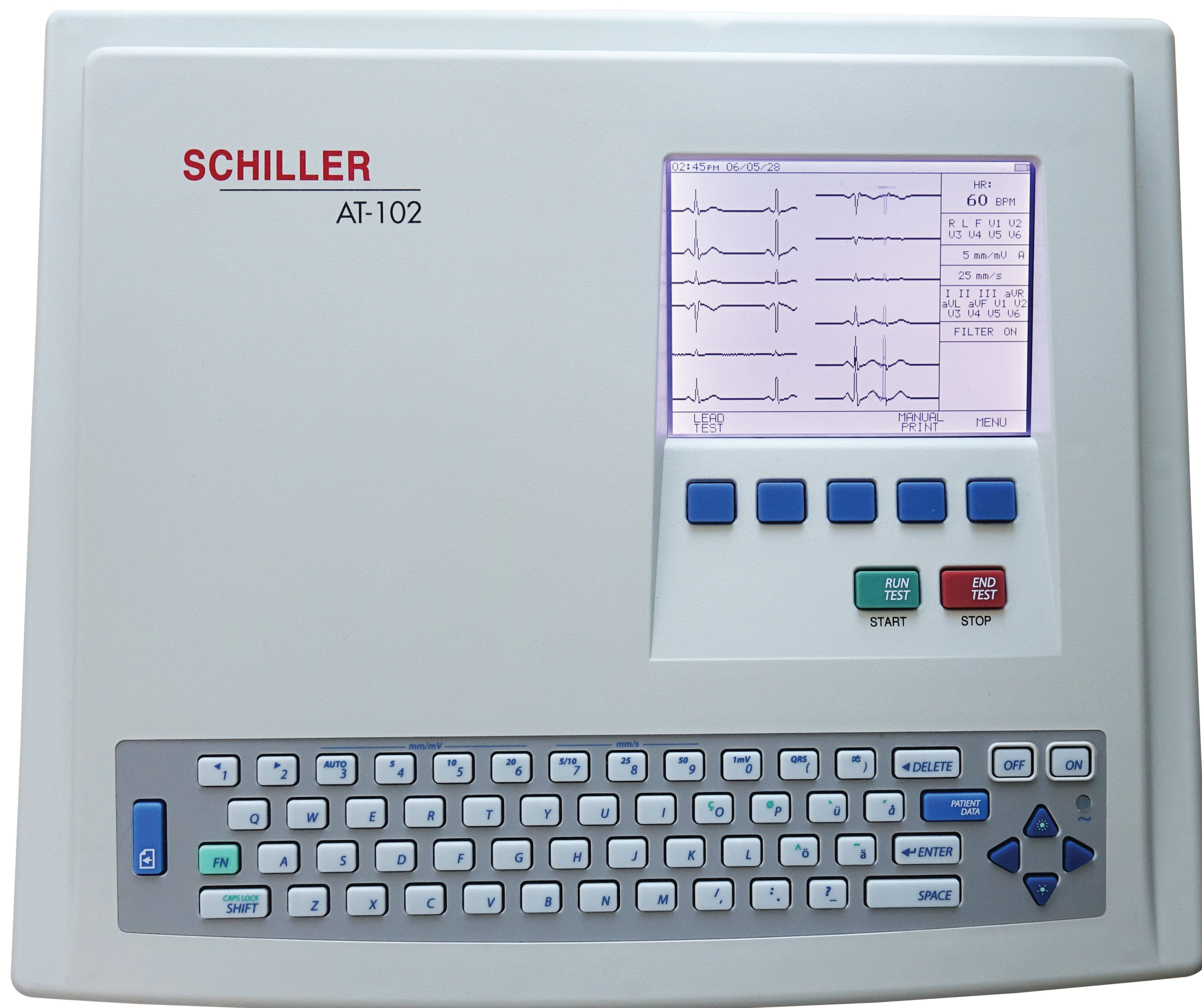




SCHILLER
The Art of Diagnostics



CARDIOVIT AT-102

Perfect 12-channel EKG solutions

Perfect 12-channel EKG solutions



The high quality EKG that meets the highest demands and offers excellent value for money!

The AT-102 is a versatile EKG that offers speed, simplicity, and options that adapt to your practice needs and help you provide the best patient care at an affordable price. The user interface and intuitive operation allow for higher productivity and efficiency while offering great value for money.

The CARDIOVIT AT-102 is a resting EKG system that is particularly suitable for routine use in practice, clinic, or emergency medicine due to its intuitive and easy operation with direct function keys. The integrated high-resolution A4 real-time printer guarantees long-term storing of EKG recordings in archive quality.

On its brilliant graphic display, all 12 EKG leads can be displayed in freely selectable sequences of 3, 6, or 12. The printout of the recording includes interpretation and measurements.

Furthermore, an external LCD screen can be connected to the CARDIOVIT AT-102 (optional).

Take fast EKG readings with the touch of a button and ensure accuracy following simple on-screen instructions.

SCHILLER AT-102 EKG is best choice for:

- Hospitals
- Practices
- Clinics
- Clinical research institutes



CARDIOVIT AT-102

RESTING EKG



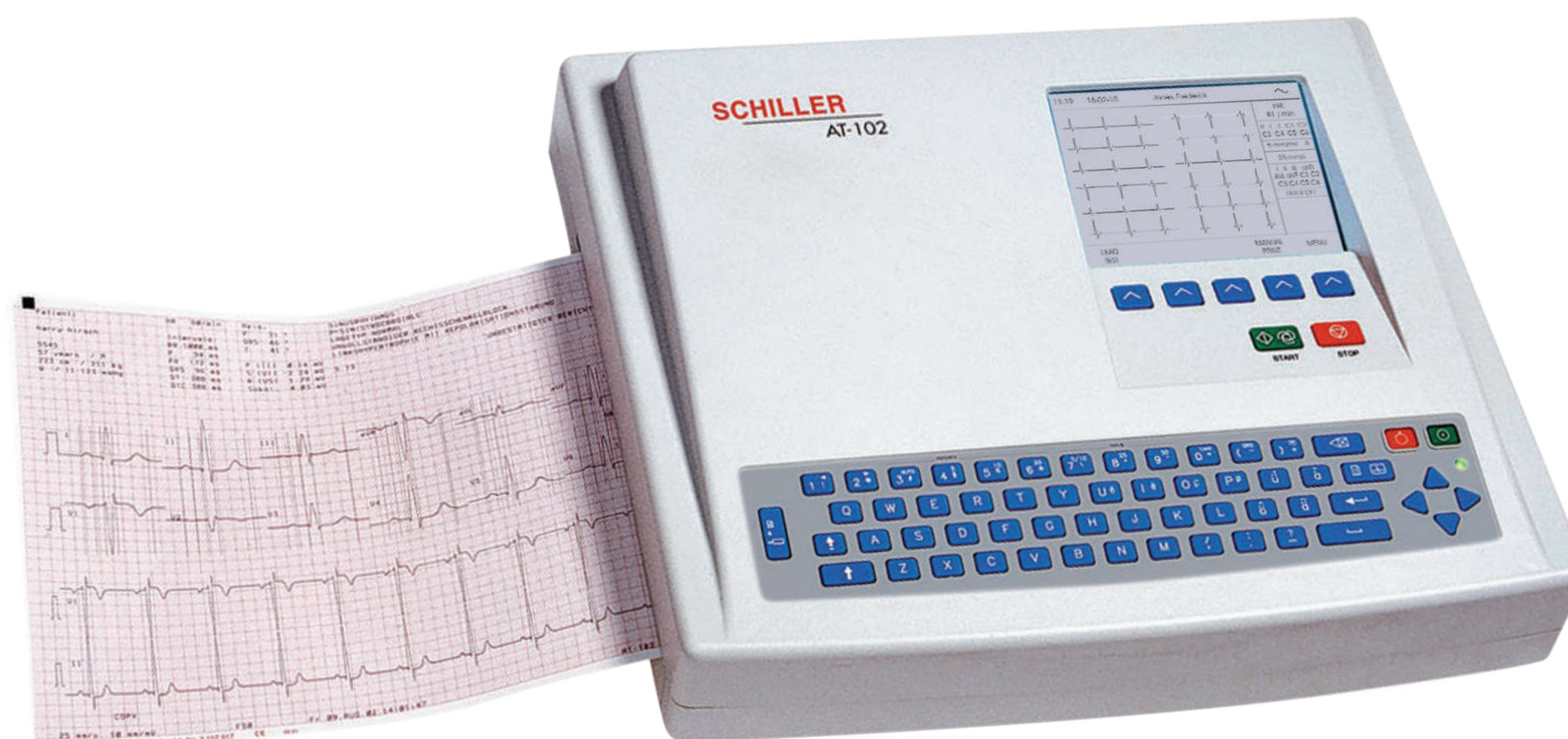
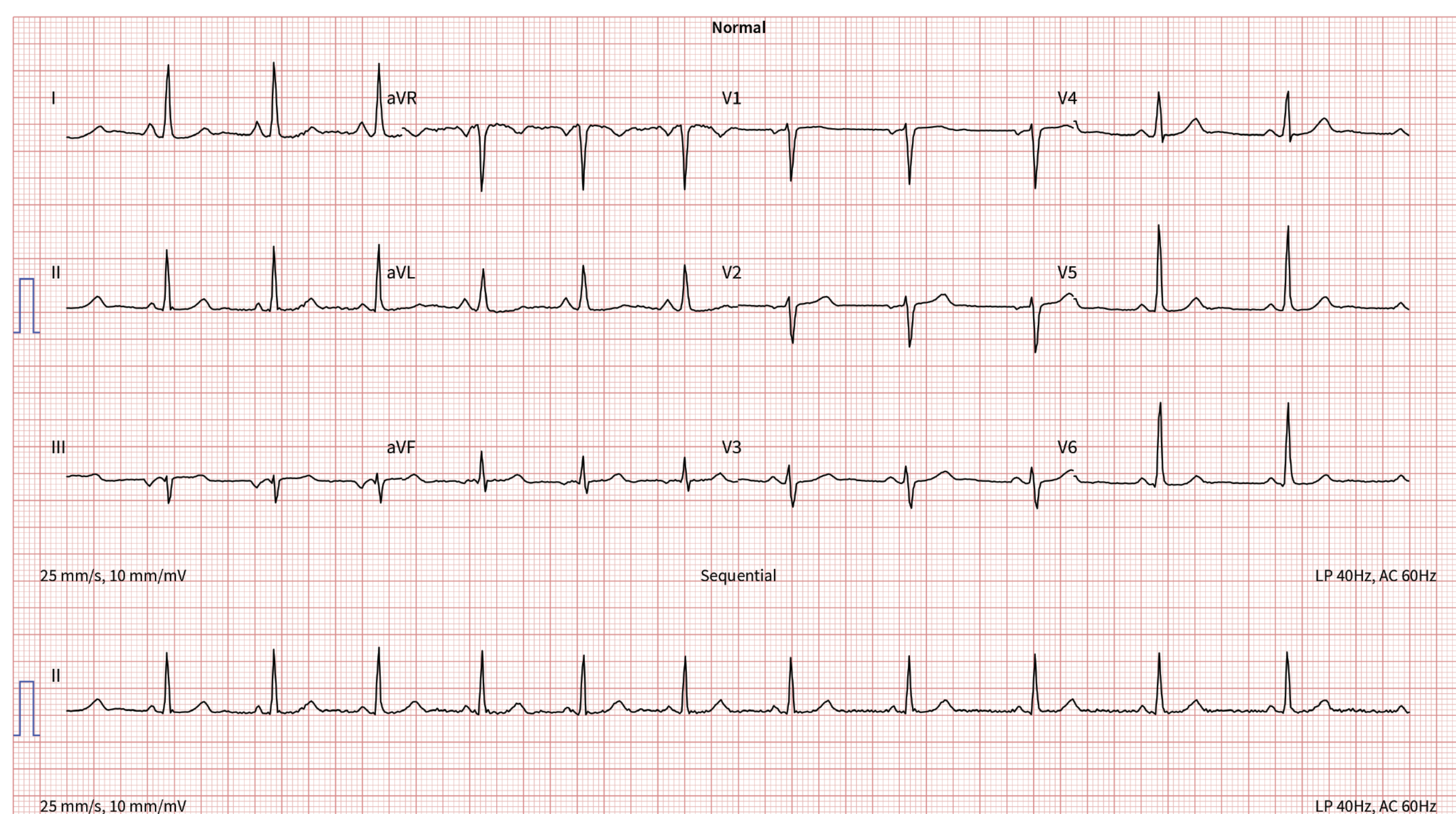
BEST QUALITY PRICE RATIO STANDALONE EKG

PN 9.070000*

The CARDIOVIT AT-102 is an excellent 12-channel EKG to record and automatically analyze resting EKGs and resting rhythm. This standalone compact EKG provides comprehensive functionality to meet the demands of any physician office.

FEATURES:

- Intuitive, easy operation with direct function keys
- 12-channel resting EKG
- Interpretation
- Internal memory for up to 40 records
- Integral full size thermal quality printer with various user defined print format options
- Full size keyboard
- Dedicated soft key interface for easy user friendly operation



*Not upgradable to Spirometry

CARDIOVIT AT-102

SYSTEM

Dimensions:	400 x 330 x 101 mm, approx. 5 kg
On-screen status indicators:	Battery status, date, time, power source
Control panel and keyboard:	User-friendly, alphanumeric keyboard, LED indicator and LC display
Power supply requirements:	220–240 V (nominal), 50/60 Hz; 110–115 V (nominal), 50/60 Hz; stand-alone operation with built-in rechargeable battery; LED indicator for mains operation, integrated power supply unit
Battery capacity:	4 hours of normal use (approx. 300 automatic EKG printouts)
Power consumption:	Max. 30 VA
Line frequency filter:	Distortion-free suppression of superimposed 50 or 60 Hz sinusoidal interferences using adaptive digital filtering (SCHILLER Powerline Filter SPF)
Frequency range of digital recording system:	0 Hz – 150 Hz (IEC/AHA)
Chart paper:	Thermo-reactive, Z-folded, 210 mm wide (A4, 8.5 x 11 inches)
Printing process:	High-resolution thermal head printer, 8 dots/mm (amplitude axis), 40 dots/mm (time axis) @ 25 mm/s
Memory:	Possibility to save up to 40 Resting EKG or Spirometry measurements
Environmental conditions:	Temperature, operating: 10° to 40°C Temperature, storage: -10° to 50°C Relative humidity: 25 to 95% (no condensation) Pressure during operation: 700 to 1060 hPa

TECHNICAL DATA FOR ECG

Patient input circuit:	Fully floating and isolated, defibrillation-protected (only with original SCHILLER patient cable)
Monitor display:	3- 6 or 12-channel display of the selected leads 25, 50 mm/s 5, 10, 20 mm/mV Filter status (on/off) Insufficient electrode contact Heart Frequency, HF mm/ mV, mm /s
Leads:	12 simultaneous leads: Standard / Cabrera
Chart printout speed:	5/10/25/50 mm/s (manual print)
Sensitivities:	5/10/20 mm/mV, either automatically adjusted or manually selected
Automatic lead programs:	6/12-channel presentations of 12 simultaneously recorded standard lead on one or more A4 (8.5 x 11 inches) pages. Numerous printout formats can be selected
Data record:	Patient data (name, age, height, weight, BP), user ID. Listing of all ECG recording conditions (date, time, filter).
Recording track:	6/12-channel presentation, optimal positioning on a width of 200 mm, automatic baseline adjustment
Filter:	Myogram filter (muscle tremor filter): 25 Hz or 35 Hz, can be switched on/off (SCHILLER Baseline Stabilizer SBS, SCHILLER SmoothingFilter SSF)
ECG amplifier:	Simultaneous recording of all 9 active electrode signals (=12 leads). Pacemaker detection: 2 mV/ 0,1 ms

TECHNICAL DATA



SCHILLER
The Art of Diagnostics



SAFETY STANDARDS

Safety Standards:	IEC/EN 60601-1; UL 60601-1; C22.2 No. 601.1-M90; IEC/EN 60601-2-25; IEC/EN 60601-1-2 (EMC)
Protection Class:	I according to IEC/EN 60601-1 (with internal power supply)
Applied Part:	CF according IEC/EN 60601-1
Conformity:	according Directive 93/42/EEC (Medical Devices)
Classification:	Ila according Directive 93/92/EEC



MOUNTING OPTIONS

Rolling stand	PN 2.101125SAM
---------------	----------------



CARDIOVIT AT-102

The background of the entire page is a repeating pattern of stylized hearts and lungs in a light gray color. The hearts are simple outlines, and the lungs are also simple outlines with a central vein. The pattern is dense and covers the entire area.

SCHILLER

A M E R I C A S

Call us: **1-888-845-8455**

Visit us at **schillerus.com**

10903 NW 33rd St,
Doral, FL 33172, USA